

ARCHITECTURE &
INTERIOR DESIGN
ART

WARDROBES

KITCHENS

ITALIAN FURNITURE

SMART HOME LIFT

ARTISAN WOODEN FLOORING

LIVE EDGE WOOD



ASHARYS
EST. 1989



A foreword by Arif Ashary, Founder & Creative Director

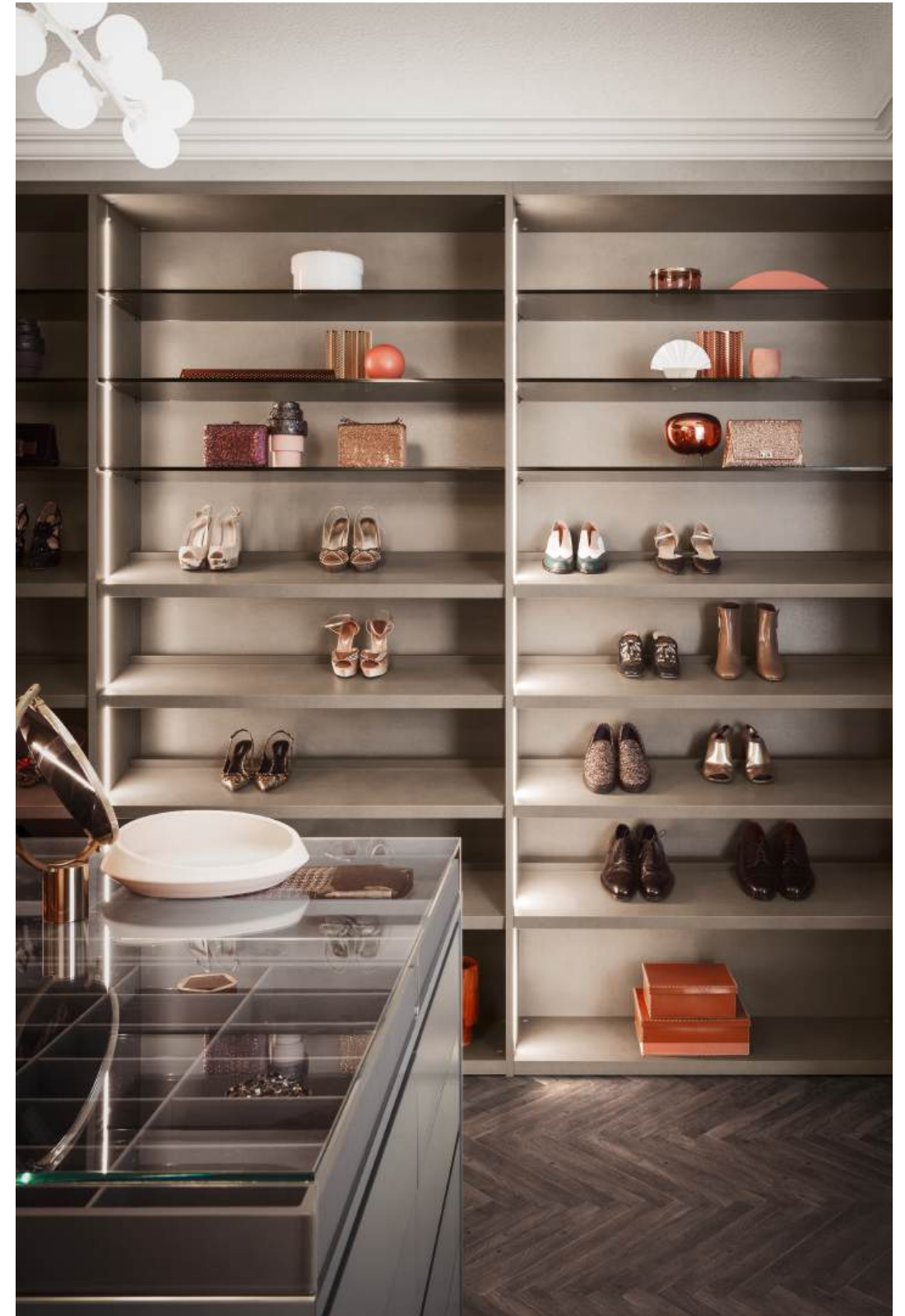
A work of art is an act of great bravery. If the artist is honest with himself, his art fully exposes his spirit to the audience. He stands naked, waiting and hoping that what he has expressed in his words, brush strokes and sketches will stir his viewers and remind them of a similar emotion they too have experienced. All artists struggle with this duality of producing work, that is a true reflection of their passions and that also leaves the audience satisfied. I am extremely fortunate that, throughout my career, I have been able to

achieve both of these goals. I believe the key to this lies in the fact that all my work is meant to be enjoyed environmentally. Whether I am creating a piece of furniture, painting on canvas or designing a building, my art is made to be enjoyed and lived with on a daily basis. It is accessible and approachable. Its purpose is to bring beauty into the spaces where you work, relax and live while making these intimate places more functional and comfortable. I invite you to join me in dreaming without limits.

WARDROBES



ASHARYS
EST. 1989



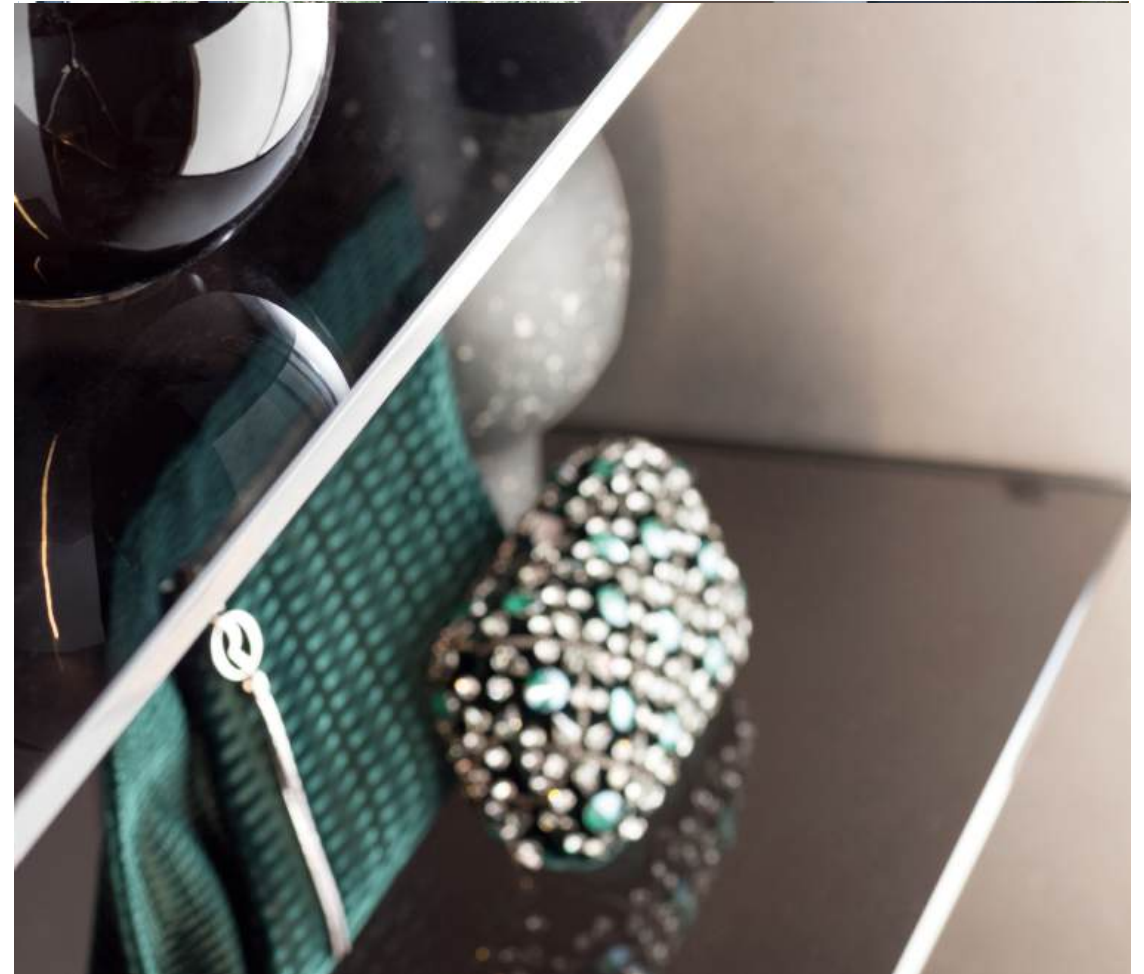
WARDROBES



The Island module appears like a dreamy oasis in the middle of the room: an island for walk-in closets evoking the most exclusive boutique furnishings, directly in your home sea. Thanks to the possibility of being equipped with drawers, shelves and shoe-racks, it's an useful and versatile shelter for any kind of wardrobe; moreover, it offers space for jewels and valuables, or for emotional and simple but priceless memories, to lull with care above a velvet lining, inside an elegant display cabinet that comfortably contains and safeguards your most precious treasure.



WARDROBES



The understated and delicate style of simplicity meets the ultimate in expressiveness and customisation. Elegant storage spaces for your most intricate keepsakes. These storage solutions ensure a visualisation of your possessions while simultaneously providing safety and privacy.



WARDROBES



A fresh, modern design inspired by the contemporary lines of minimal aesthetics. The sophisticated shape of the handle – consisting of a vertical groove in the door edge and of an inner surface that can be customised in lacquered, metallic and wood finishes – is reminiscent of the tapered profile of a wing. The doors come in an even wider range of finishes, available in glass, mirror, wood and lacquer, coordinated with or differing from the handle for a tone-on-tone or contrasting effect.



WARDROBES



Practical, fascinating elements allow unsurpassable freedom of arrangement and can be customised in a wide range of finishes to meet the most demanding requests. Available with or without back panels, the structure can be completed by lots of different modular elements such as shelves, drawer units, suspended cubbies and hangers.



WARDROBES



Glass reveals, reflects and mingles the inside with the outside in the most fascinating of ways. The mediator of this dialogue is the glass door panel, in Extraclear Transparent, Transparent or Satin Fumé and Stop Sol finishes and in the three colours available for Trama screen-printed glass: different aesthetic features for varying degrees of transparency. The door sports an intriguing, black, screen-printed frame. The long, slim, inclined handle is made from black anodised aluminium matching the frame and is discreet and handy on both hinged and sliding doors.

